

nu®
Simply Better



User's Manual
V 1.2

GPS Tracker^{G200}

Disclaimer

- User is advised that changes may be made to the information in this publication without prior notice. Changes will be incorporated in new release of this manual or supplementary documents and publications as necessary.
- Please keep the record of product model name, serial number, IMEI, and purchase date and place of product.
- The serial number, model number, and IMEI are printed on a label in the battery compartment. All correspondence concerning your device shall include the serial number, IMEI, model name, and date of purchase. This document has been carefully reviewed for accuracy. NU takes no responsibility for any inadvertent errors or misprints. NU's liability with respect to this document is subject to any limitation of liability set out in the applicable product warranty.
- No part of this publication may be reproduced, stored in a retrieval system, or transmitted in any form or by any means, electronically, mechanically, by photocopy, recording or otherwise, without the prior written permission of NU Inc.

Overview

G200 is a slim size and highly accurate location tracking device with build-in GPS and GSM/GPRS modules. With latest GPS technology, the G200 can provide position information under dynamic conditions. The information includes latitude, longitude, GPS location data, GSM location data, battery capacity to users.

Furthermore, the G200 is an ideal device capable of providing certain level of security and protection for beloved people/car and valuable assets.

Read carefully before start

1. A quite often operation mistake is to forget inserting the SIM card before power-on. In such case, G200 is hung up with 4 LEDs fully on and no response to any user's operation. If this is happening, users need to remove the battery and insert both SIM card and battery again.
2. The SIM card needs to be inserted with correct orientation. Please refer to the following drawing.



SIM Direction

3. The back (battery) cover of device needs to be installed with correct orientation. Please refer to a drawing on the inner side of back cover for proper installation.



Bottom

Features

- Integration of GPS and GPRS/GSM mobile modem
- Stylish design, slim size, and light-weight
- Convenient report with http link to map information
- By configuration, G200 can send its GPS report via SMS messages according to the parameters that was configured before.
- Emergency Alert and fixed message to pre-defined receivers: When the carrier is under an urgent circumstance and presses and hold the SOS Button of G200 for 3 seconds, the device will immediately send out an SOS message along with its GPS positioning data showing the emergency circumstance to user predefined phone numbers. After sending message, G200 initiates a voice call to pre-defined SOS phone number and connected for 10 seconds as a backup communication channel during emergency.
- Off the shelf standard Nokia™ BL-6P battery and charger with USB connector

*Nokia is registration trademark and BL-6P is battery model name of Nokia Corporation

Package contents

Main Product
(Colors depends on purchased model)



G200 Black



G200 White



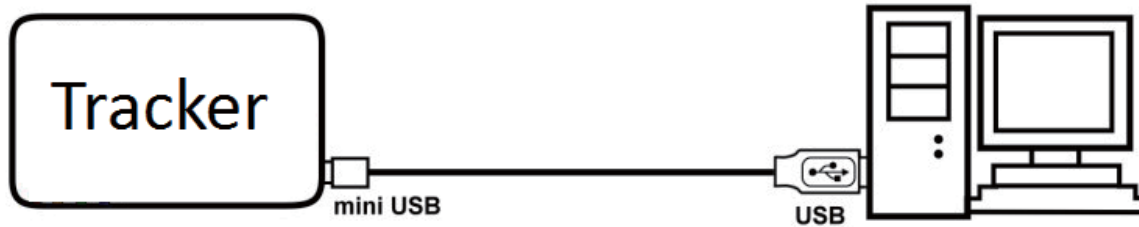
Silicon Pouch

Battery

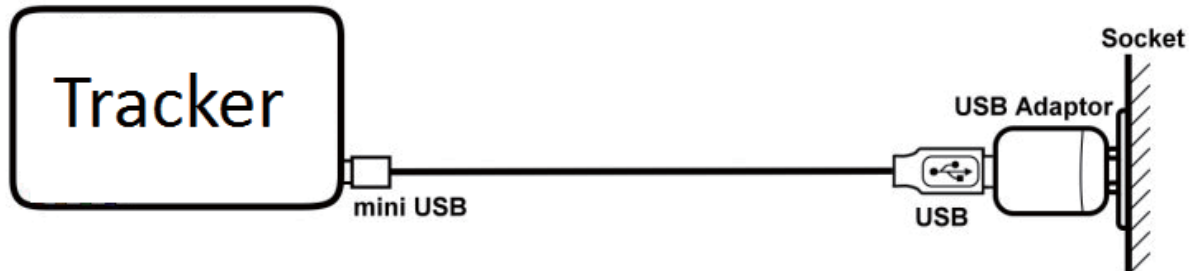
Mini USB connector

Charging the device

Mode 1: Using bundled USB cable connect to PC or NB PC



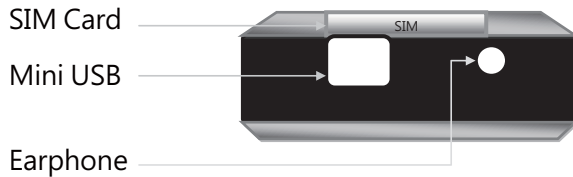
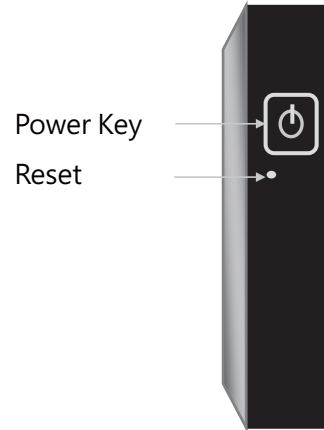
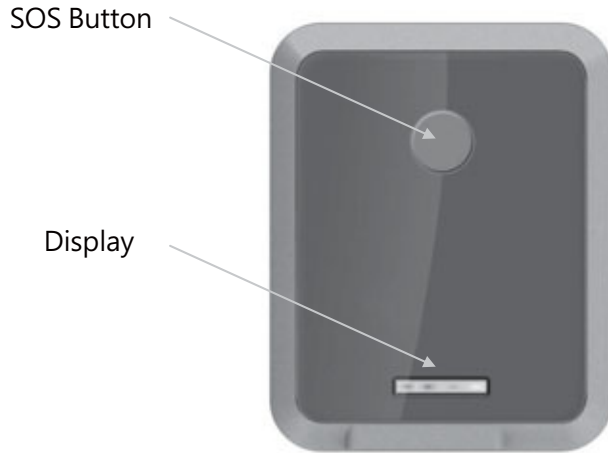
Mode 2: Using USB cable connect to USB charger



Specification

GPS		GSM/GPRS	
Chip	SiRFstarIII GSC3LT, low power version	Quad-Band	GSM 850 / 900 / 1800 / 1900 MHz class 4 (2 W) for EGSM 850/900 class 1 (1 W) for GSM 1800/1900
Channels	Up to 20	Voice	HR / FR / EFR / AMR, Echo cancellation, Noise reduction
Trickle Power Mode	50 mW	SMS	PDU / Text mode / Cell broadcast
Position Accuracy		GPRS	Class 10 (4 downlink, 2 uplink, max. 5) Mobile Station Class B PBCCH and CS 1...CS 4 supported
Autonomous	2.5m (Circular Error Probability)	Device	
Sensitivity		Battery	650mAh Li-On
Acquisition	-139dBm	Dimensions	60(H)x49(W)x18.6(D) mm
Tracking	-156dBm	Weight	32g (net)/ 48g (battery included)
TTFF		Note: Specifications and appearance subject to change without prior notice.	
Hot Start	<2s		
Warm Start	<45s		
Cold Start	<60s		

Drawings



Descriptions

Power Key	<p>Turning on and off the device</p> <ul style="list-style-type: none"> ● Turn-on: hold the key (>3s) until the LED lights flash ● Turn-off: hold the key (>3s) until the LED lights go off
SOS button	<p>Emergency alert key</p> <ul style="list-style-type: none"> ● Effective key press: hold the key (>3s) until the LED lights go off ● Whenever SOS key is pressed and hold for over 3s, the alert message will be sent to all the phone numbers defined by command " Controller" and " Safe" ● As a backup alert route, the G200 initiates a phone call to SOS phone number and last for 10 seconds after sending SMS
Reset	<p>Device reset when press and hold for over 1s</p> <ul style="list-style-type: none"> ● The reset is like a forcing power off, then turning back on. It will not affects any existing parameters or setting already in the device
Display	<p>Device status display LEDs (white, blue, red, green)</p> <ul style="list-style-type: none"> ● White : Device operation. It blinks once every 4 seconds to indicate normal operation ● Blue : GPS status. <ul style="list-style-type: none"> ■ On : GPS module is working to fix the location ■ Blink once/4s : GPS module has not finished the first location fix yet. ■ Off : GPS module is in standby mode for power saving ● Green : GSM/GPRS status. It turns on whenever a GSM/GPRS communications is in process <ul style="list-style-type: none"> ● Red: Power status. <ul style="list-style-type: none"> Operation <ul style="list-style-type: none"> ■ Off: battery is over 60% capacity ■ Blink once/4s: battery is btw 40%-60% capacity ■ Blink once/2s: battery is btw 20%-40% capacity ■ Blink once/1s: battery is below 20% capacity Charging <ul style="list-style-type: none"> Off: fully charged On: Charging
SIM Card Jacket	<p>Insert SIM card here for GSM/GPRS connection</p>
Mini USB Connector	<p>For charging battery when connect to a PC USB bus or optional charger</p>

Descriptions

Function	SMS Command (case insensitive)	Descriptions
Report tracker location	LOCATION (or) @1 (or) make a phone call to the tracker SIM card number	<ul style="list-style-type: none"> ● Send @1 or location SMS to locate the tracker User also can make a phone call to the tracker SIM card phone number to locate the tracker ● G200 send 1st SMS of GSM cell id position for coarse location as http://59.120.48.55/maps.aspx A direct click on the URL will show the map on your mobile (GPRS or 3.5G data link must be enabled for your mobile). ● After location fix, G200 send another SMS as: http://maps.google.com/maps?q=25.02880116,121.46919333. A direct click on the URL will show the map on your mobile. ● If an effective GPS signal is unavailable, a GSM cell id is caught and sent for coarse
Activate vibration sensor	safe on (or) @2	Sensor is standing by to detect unusual vibration when parking
Deactivate vibration sensor	Safe off (or) @3	Put sensor into rest when moving or in secured environment
Setup mobile number of receivers for vibration alarm	Safe: +886928xxxxxx/+886928***** (or) Safe: 0928xxxxxx/0928*****	<ul style="list-style-type: none"> ● The first mobile 0928xxxxxx is used for voice call when alarming, the call lasts for 10 seconds and hang up. ● The 2nd mobile 0928***** is used for sending; the message is " Target is Moving" *The 1st and 2nd mobile could be the same number *If not setting, the mobile setup by Controller is used as receiver location fix same as 1st SMS form.

Descriptions

Function	SMS Command (case insensitive)	Descriptions
Setup unique controller mobile number as tracker only acceptable number	Controller: +(country code)(mobile number) Ex. Controller: +886928xxxxxx	After setup, tracker can only accept command from the specific mobile number/location fix same as 1st SMS form.
Reset Controller phone number	Reset: (last 6 digits of IMEI #) Ex. Reset:040738	It is used to reset the controller number to none. One can find the IMEI number as follows



IMEI Number

Care and maintenance

Your device is a product of superior design and craftsmanship and should be treated with care. The following suggestions will help you protect your device.

- Keep the device dry. Precipitation, humidity, and all types of liquids or moisture can contain minerals that will corrode electronic circuits. If your device does get wet, remove the battery, and allow the device to dry completely before replacing it.
- Do not use or store the device in dusty, dirty areas. Its moving parts and electronic components can be damaged.
- Do not store the device in hot areas. High temperatures can shorten the life of electronic devices, damage batteries, and warp or melt certain plastics.
- Do not store the device in cold areas. When the device returns to its normal temperature, moisture can form inside the device and damage electronic circuit boards.
- Do not attempt to open the device other than as instructed in this manual.
- Do not drop, knock, or shake the device. Rough handling can break internal circuit boards and fine mechanics.
- Do not use harsh chemicals, cleaning solvents, or strong detergents to clean the device.
- Do not paint the device. Paint can clog the moving parts and prevent proper operation.
- Use chargers indoors.
- Remove the battery or unplug the charger before insert or remove the SIM card.



For further information :



B E N E L U X
Spoorstraat 7 – U705
4702VV Roosendaal
Nederland

Info.rcbi@gmail.com

Tel NL : +31-(0)164-602928
Fax NL : +31-(0)164-602928
GSM NL : +31-(0)6-53618876
GSM B : +32-(0)495-518486